

## PRODUCT HIGHLIGHTS

### BUILDING SOLUTIONS



More information



**NEW**

Product overview



### YOUR COMPLETE SYSTEM FOR STAIRS – FROM PLANNING TO MOUNTING

#### PLANNING

- » Bearing system for total decoupling of stairs and landing elements
- » Optimized transport anchors for stairs available
- » Calculation of transport anchors for single-flight stairs by StepPHix software

#### PRODUCTION

- » Complete documentation

#### MOUNTING

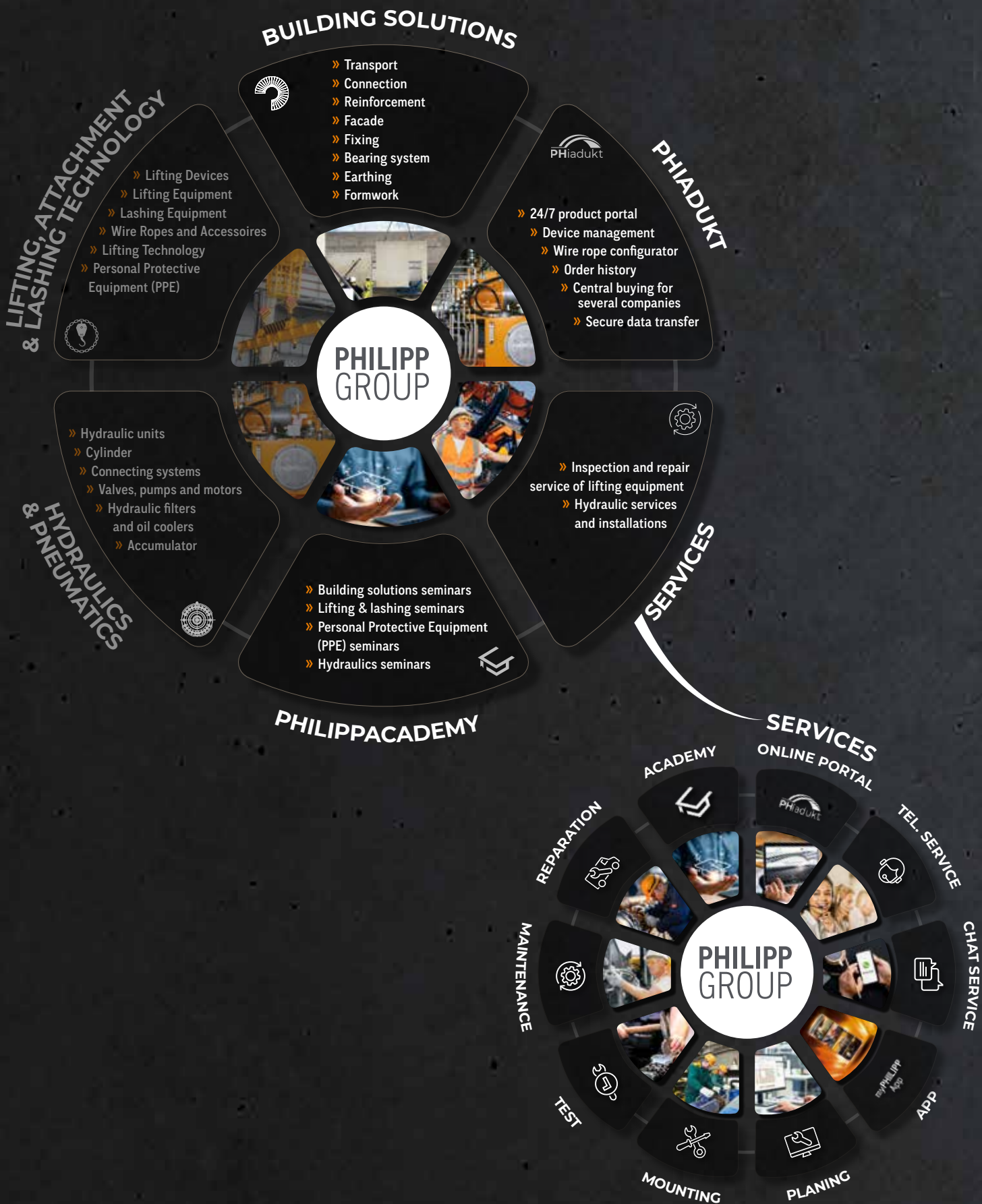
- » Safe installation of heavy units with new balancing equipment GANTERUD
- » „Careful “ mounting with Lifty TEX (s. overleaf)

#### USE

- » Sealing caps made of fiber concrete, stainless steel or plastic

# PORTFOLIO 360°

## PRODUCTS AND SERVICES

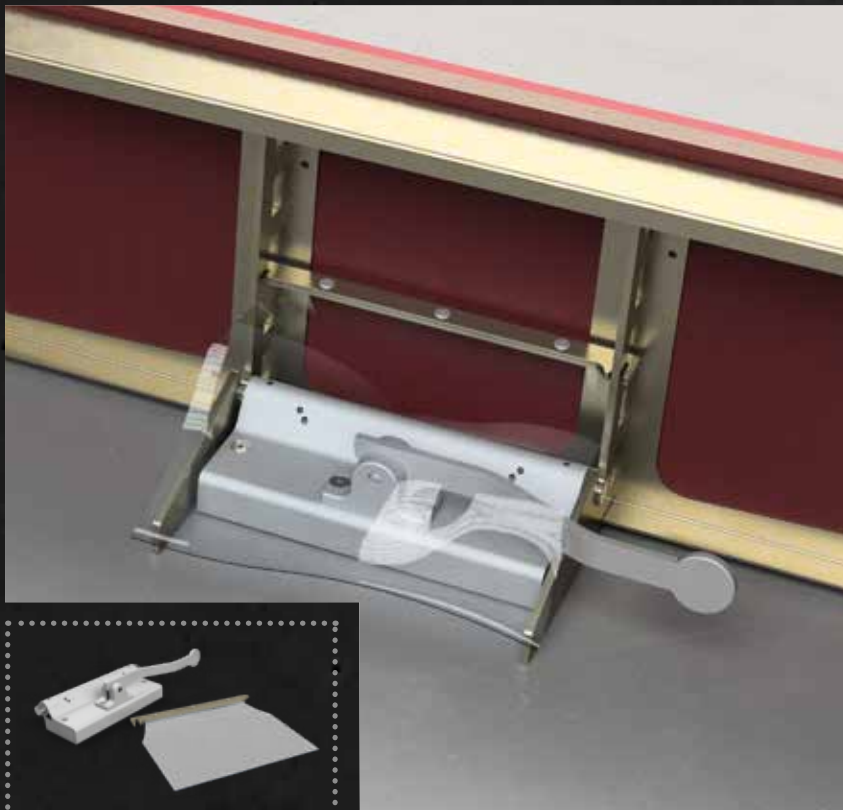
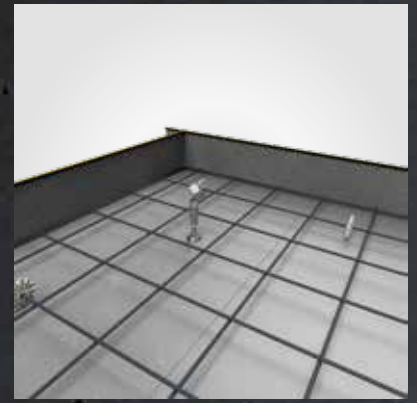
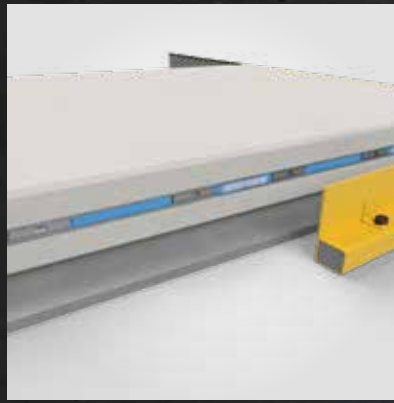


## MAGNETIC SOLUTIONS

Bonding or nailing is old-fashioned – magnets are faster and easier to handle. The formwork remains untouched and does not need to be cleaned. Strong magnets ensure precise positioning but also quicker demoulding.

### CHARACTERISTICS / ADVANTAGES

- » **Transport anchor systems**
  - » Magnetic fixations in various versions
- » **Connection technology**
  - » For Power series and constructive rails available
- » **Fixing technology**
  - » For all cast-in anchor profiles – push-in, fix, ready
  - » **NEW:** for fixing sockets – plug on (no screwing!), fix, ready



## MAGFLY AP + SPLASH GUARD

The innovative shuttering magnet enables by his extremely light body an economical and power saving working. No additional tools or adapters required for use.

### CHARACTERISTICS / ADVANTAGES

- » **Unique force to mass ratio**
- » **Easy and ergonomic handling by foot/spring system**
- » **Fast and precise fixation**
- » **Millimetre-precise positioning by patented MagFly® technology**
- » **No additional sealing with silicone required**

### SAMPLES OF APPLICATIONS

- » Shuttering magnet circulation plants as well as tilt-up tables
- » Formwork for walls, columns etc.

## THE **NEW** SOFTWARE PORTAL

We are happy to present you our brand-new PHILIPP-SOFTWARE-LAB!

Register  
now  
and start  
immediately!





## PB ANCHOR, SPANNSCHLOSS, RUBBERELAST

The next generation for a simple connection of concrete elements consisting of a PHILIPP PB permanent anchor, BT-Spannschloss and RubberElast. The system to screw has high load capacities and transfers axial and shear loads without problems. Mounting is done easily without delay and removable at any time.

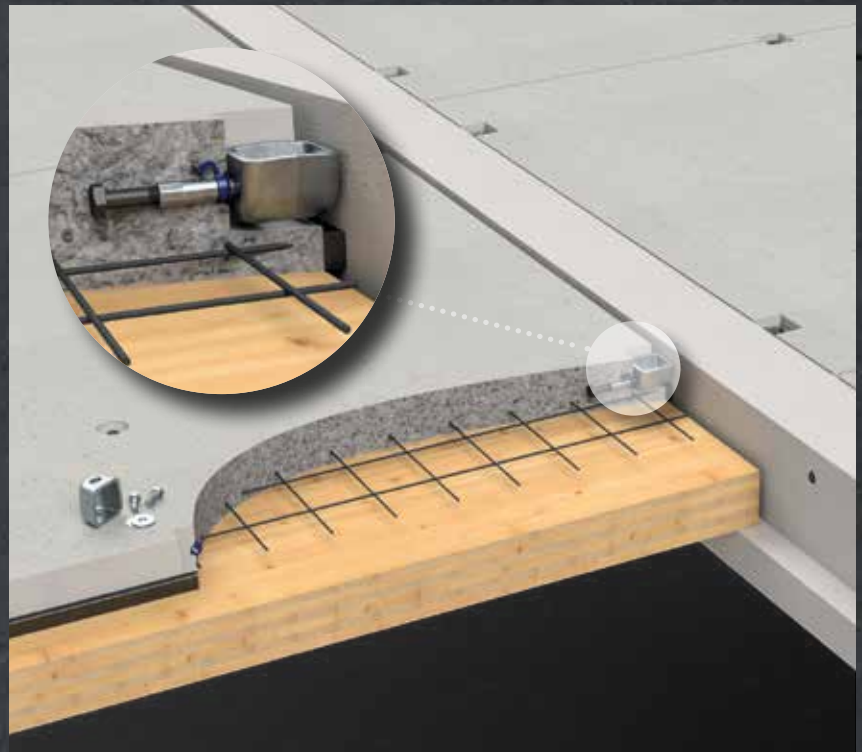
### CHARACTERISTICS / ADVANTAGES

- » Approved “dry” screw connection without joint grouting, so no hardening or downtimes
- » Weather-independent mounting without special tools
- » Immediately fully loadable and removable at any time
- » Three point connection (T-connection) possible
- » Watertight, permanently elastic sealing of the connection by using RubberElast joint tape

### SAMPLES OF APPLICATIONS

- » Wood-concrete-hybrid elements
- » Retaining walls for flood protection
- » Agricultural elements

- » Concrete pipes and manholes
- » Temporal buildings



Diagonal tension **WITHOUT** additional reinforcement



Diagonal tension **WITH** additional reinforcement



## SCREW ANCHOR

Screw anchors are the perfect solution for applications in extremely thin elements such as slabs, because of the short anchoring depth. Normally, there is no need for an additional reinforcement for diagonal tension when using in slabs, this noticeably simplifies the anchor installation. Applications for diagonal and axial lifting situations can be solved with this anchor type without any restriction.

### CHARACTERISTICS / ADVANTAGES

- » Perfect transport anchor for slabs, normally no rebar for diagonal tension required
- » Small recesses on the concrete surface
- » No parts projecting above the element's surface
- » Resistant to light soiling due to special round thread

With our software center you get:

### BETTER PERFORMANCE

Benefit from optimized and powerful tools that make your daily work more efficient.

### MAXIMUM USABILITY

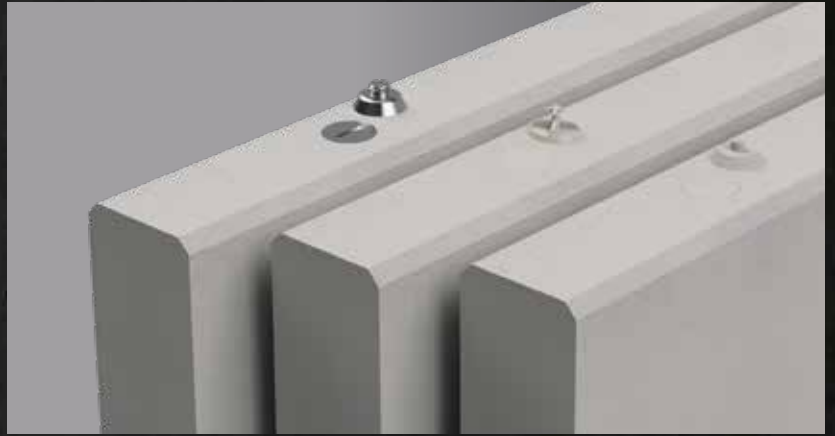
Our software solutions are designed to offer you the most added value and push your projects.

## KHN SYSTEM

The KHN system is a multifunctional system for Threaded transport anchors and consists of recess formers, lifting devices and sealing caps. We increased the product range with sealing caps made of fibre concrete now which close recesses inconspicuous and considerably..

### CHARACTERISTICS / ADVANTAGES

- » Visual attractive sealing caps made of fibre concrete, stainless steel or plastic for all thread sizes available
- » System suitable for all load directions (axial, diagonal and lateral tension)
- » Consistent colour coding enables clear assignment of system components
- » Long lasting and reusable components



## LIFTY TEX

The Lifty TEX is a powerful combination of the well-known lifting device Lifty and a strong textile round sling including an edge protection. Suitable for all load directions Lifty TEX is perfect for the use with lightweight or moderate heavy concrete elements, e.g. stair cases, which need a “protection” during the transport against damages from hardware.

### CHARACTERISTICS / ADVANTAGES

- » Available in sizes RD12-36, max. load capacity up to 5 t
- » Suitable for all load directions (axial, diagonal and lateral tension)
- » Lightweight and flexible textile sling, easy to handle
- » Chemical-resistant textile, does not absorb water





# PHILIPPGRUPPE

## HEADQUARTERS

Lilienthalstraße 7-9  
63741 Aschaffenburg

☎ + 49 6021 40 27-0

✉ info@philipp-gruppe.de

## PRODUCTION AND LOGISTICS

Hauptstraße 204  
63814 Mainaschaff

☎ + 49 6021 40 27-0

✉ info@philipp-gruppe.de

## OFFICE COSWIG

Roßlauer Straße 70  
06869 Coswig/Anhalt

☎ + 49 34903 6 94-0

✉ info@philipp-gruppe.de

## OFFICE NEUSS

Sperberweg 37  
41468 Neuss

☎ + 49 2131 3 59 18-0

✉ info@philipp-gruppe.de

## OFFICE TANNHEIM

Robert-Bosch-Weg 12  
88459 Tannheim /Allgäu

☎ + 49 8395 81335-0

✉ info@philipp-gruppe.de

## PHILIPP VERTRIEBS GMBH

Pfaffing 36  
5760 Saalfelden / Salzburg  
Austria

☎ + 43 6582 7 04 01

✉ info@philipp-gruppe.at



HEADQUARTERS Aschaffenburg



Visit us!

[www.philipp-group.de](http://www.philipp-group.de)